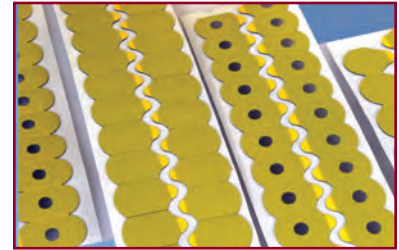


# PHANTOM® Hydro Pads (TH Version)



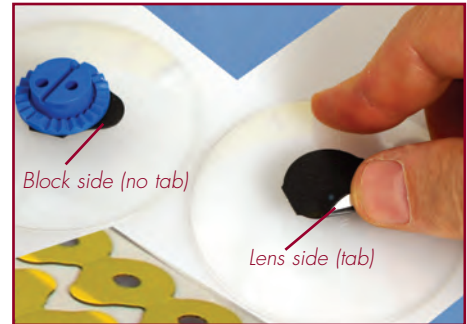
- **No slippage, excellent adhesion on *super hydrophobic/oleophobic* lenses**
- **Pass torque test**
- **Easy release tab**
- **Conform to all lens curves**
- **Available in all sizes and shapes**
- **“Super stick” pad for “Slippery” lens coatings**

Newest generation of edging pads for the *super hydrophobic/oleophobic* lenses. The new **PHANTOM® Hydro Pads (TH Version)** are designed with dual adhesive systems, to provide the appropriate amount of adhesion for the slick surface of the lens and also for the block. This prevents slippage while edging lenses, yet the pads are easy to remove leaving absolutely no residue. The new **PHANTOM® Hydro Pads** are the ultimate solution to all your edging problems. Available in different sizes to fit metal and plastic blocks.



## Specifications:

- TH1695: 24 mm, round, 7 mm center hole.
- TH1696: 18 mm x 29 mm 1/2 eye, 7 mm center hole.
- TH1685: 24 mm, round, solid center.
- TH1686: 18 mm x 29 mm 1/2 eye, solid center.
- TH1492: 26 mm, round, 7 mm center hole.
- TH1412: 17 mm x 32 mm, 7 mm center hole.
- TH1422: 17 mm x 32 mm, solid center.
- TH1293: 18 mm round, 7 mm center hole.
- TH1206: 17 mm x 24 mm, 1/2 eye, 7 mm center hole



Peel yellow liner and apply tab side to lens

## Warranty:

90 day warranty from the date of purchase.

## Packaging & Shipping:

- TH1695 packaged in a box of 2000 pads. Box Size: 8.5x8.5x3 inch. Weight: 1.7 Lb. (0.77kg)
- TH1696 packaged in a box of 2000 pads. Box Size: 8.5x8.5x3 inch. Weight: 1.5 Lb. (0.68kg)
- TH1685 packaged in a box of 2000 pads. Box Size: 8.5x8.5x3 inch. Weight: 1.8 Lb. (0.82kg)
- TH1686 packaged in a box of 2000 pads. Box Size: 8.5x8.5x3 inch. Weight: 1.6 Lb. (0.73kg)
- TH1492 packaged in a box of 1000 pads. Box Size: 8.5x8.5x3 inch. Weight: 0.9 Lb. (0.41kg)
- TH1412 packaged in a box of 1000 pads. Box Size: 8.5x8.5x3 inch. Weight: 1.00 Lb. (0.45kg)
- TH1422 packaged in a box of 1000 pads. Box Size: 8.5x8.5x3 inch. Weight: 1.00 Lb. (0.45kg)
- TH1293 packaged in a box of 1000 pads. Box Size: 8.5x8.5x3 inch. Weight: 0.6 Lb. (0.27kg)
- TH1206 packaged in a box of 1000 pads. Box Size: 8.5x8.5x3 inch. Weight: 0.6 Lb. (0.27kg)



PH-TH1695-0510

**(800) 225-5559 U.S.A.**  
+1-619-449-7754 International

[www.phantomresearch.com](http://www.phantomresearch.com)  
email: [sales@phantomresearch.com](mailto:sales@phantomresearch.com)